

PINEMONT GROVE

HOUSTON, TX

Single Family Home Rental Investment Opportunity



ONYX
RESIDENTIAL



HOUSTONIAN
CAPITAL

Onyx Residential developed a project of 18 SFH homes in the Oak Forest neighborhood in Houston Texas.

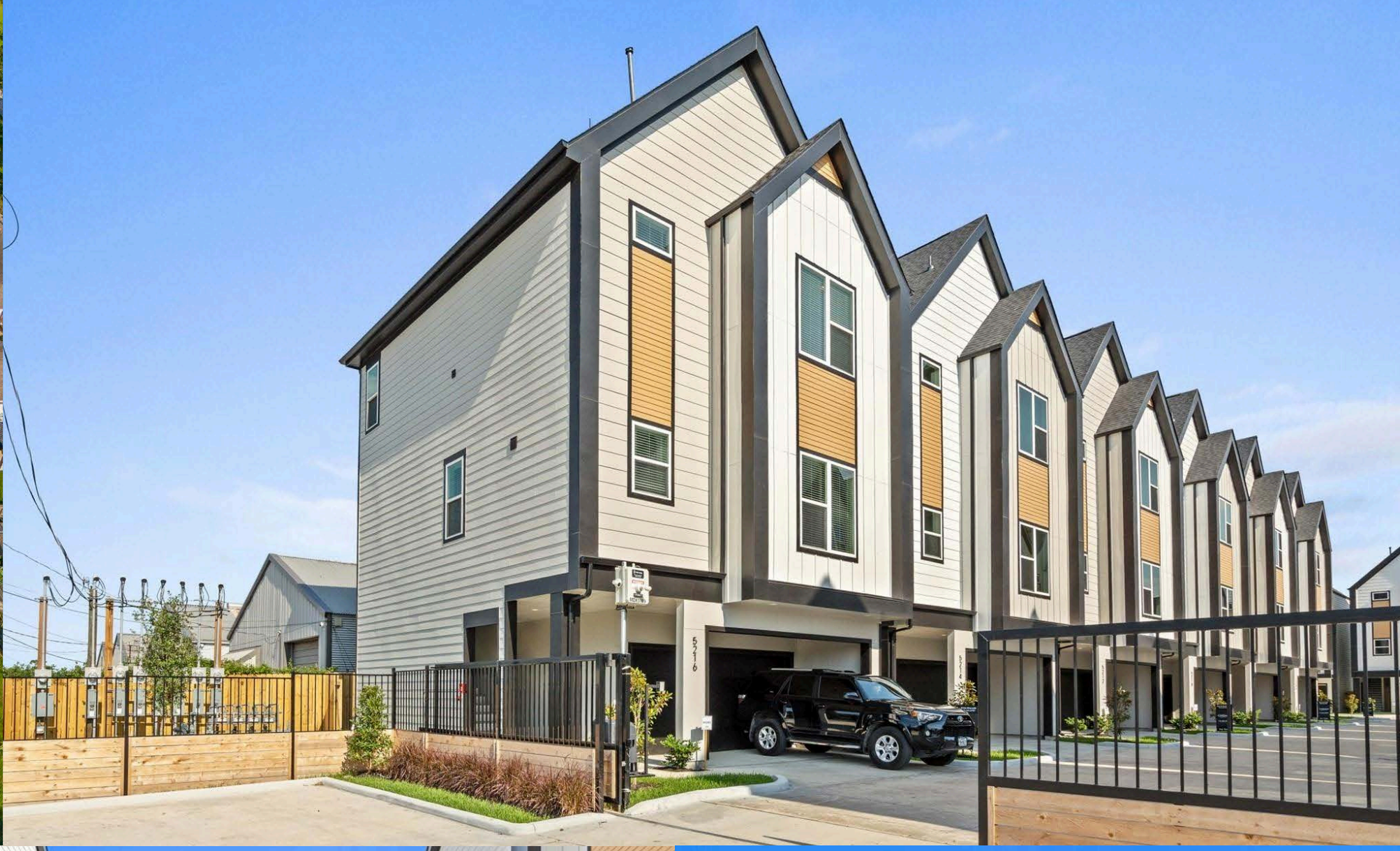
The subject property is a wonderful opportunity to buy homes in this community to hold as rentals. These are New Construction homes that provide a Builder's warranty lowering potential issues with maintenance.

Onyx Residential is a local Texas-based development company that specializes in SFH Patio developments with vast real estate experience in the area.

- ✓ 18 free-standing homes for added privacy
- ✓ Private and tranquil community in the Oak Forest & Tidwell area
- ✓ Gated community for security and exclusivity
- ✓ Open-concept living with high ceilings
- ✓ Gourmet island kitchen with stainless steel appliances
- ✓ Spacious primary suite with elegant details



EXECUTIVE SUMMARY



PINTEMONT GROVE

Unmatched Location & Accessibility:

- 📍 Located just north of I-610 in Garden Oaks
 - 📍 Minutes from Downtown Houston, The Heights, The Galleria, and the Medical Center
 - 📍 Close to parks and trails for outdoor recreation
 - 📍 Easy access to I-10, I-45, 290, 610 & Bush Intercontinental Airport
- Experience luxury, convenience, and accessibility—Welcome to Curtin Heights



LOCATION

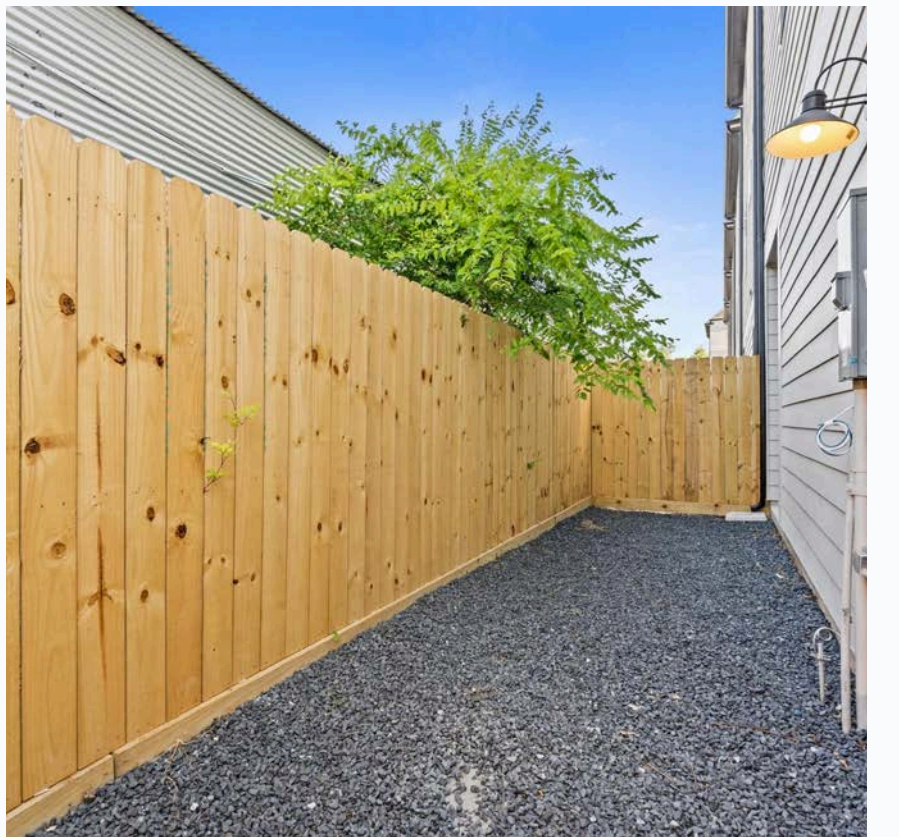
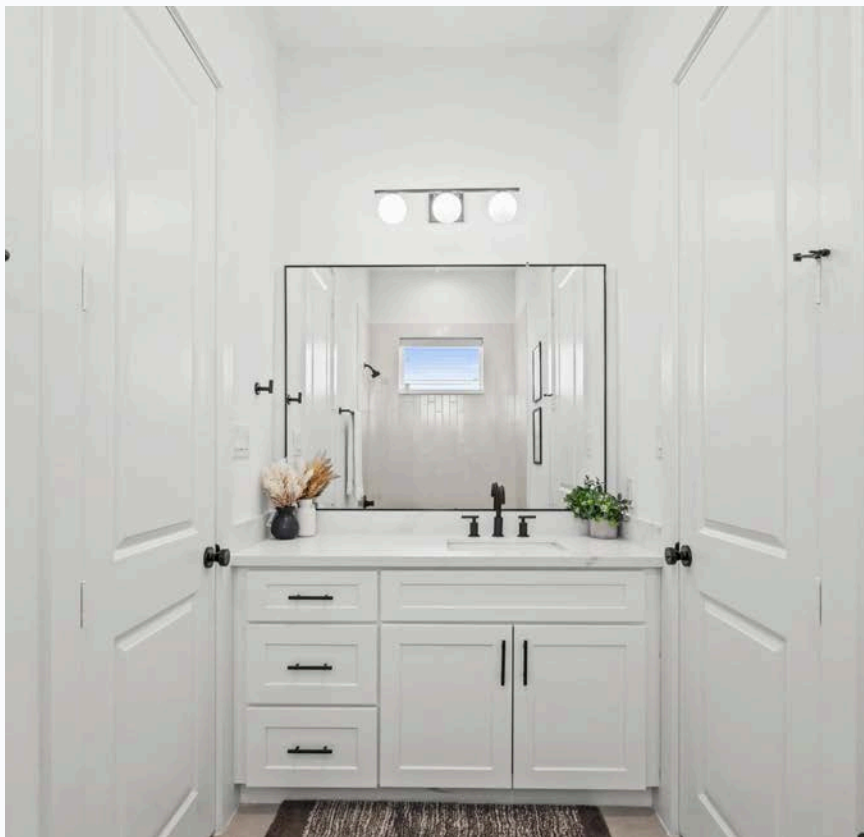


Pinemont Edge is a beautiful new development by Onyx Residential! Fully gated 18 home development that offers both luxury & location!

This two-story floor plan offers many upgraded features & superior details throughout. Enjoy open concept living with high ceilings, stainless steel appliances, island kitchen & spacious primary suite!

Located just north of I-610 in Oak Forest, minutes from Downtown destinations, Galleria & The Heights! Easy access to I-10, I-45, 290 & Bush Airport!! ESTIMATED COMPLETION WINTER 2023.

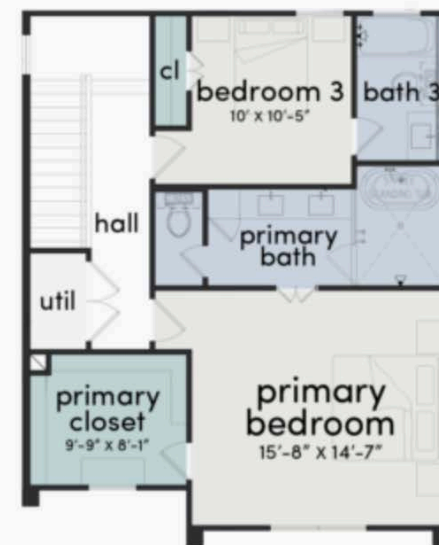
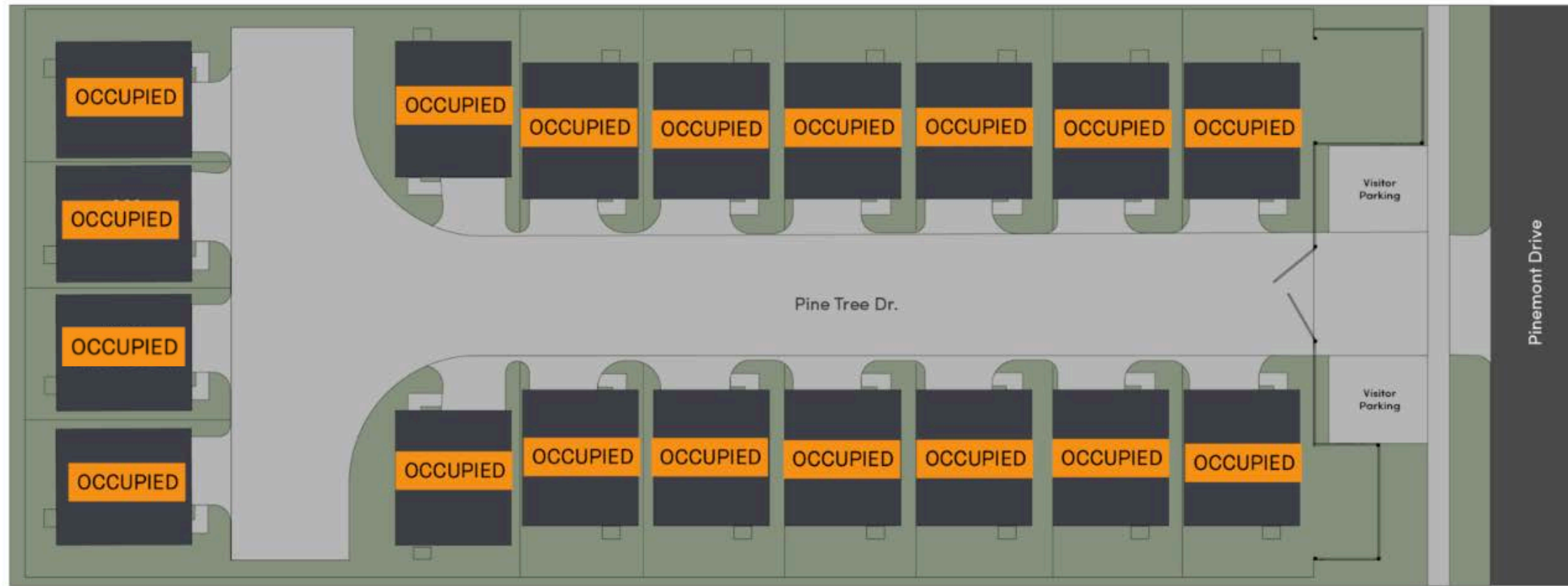
PROJECT



INTERIOR



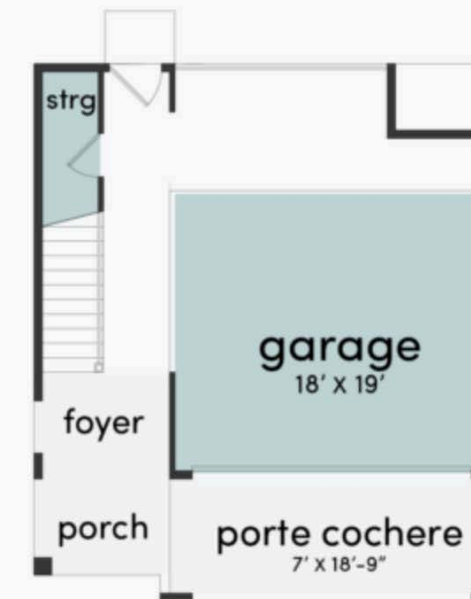
NEIGHBORHOOD AMENITIES



THIRD FLOOR



SECOND FLOOR



FIRST FLOOR

SITE PLAN & FLOOR PLAN

POPULATION AND DEMOGRAPHICS

7 MILLION RESIDENTS

Live in the nine-county Houston-The Woodlands-Sugar Land MSA

THE HOUSTON METRO

Is the nation's 5th most populous metro area, larger than Missouri or Maryland

2.3 MILLION

Approximate number of city of Houston residents

NEARLY 1 IN 4 HOUSTONIANS

Are foreign born



- 18 Homes are completed and leased.
 - New Construction Single Family Homes Development in the Nation's 4th Largest city with one of the youngest, fastest-growing and most diverse populations anywhere in the world.
 - Centrally located within minutes from Downtown, The Galleria, Medical Center and more.
 - Easy access to 290, 610 and I-45.
 - 1.1 Million New Residents in Last Decade
 - Local developer with vast real estate development experience with over 2,000+ homes built.
-

